

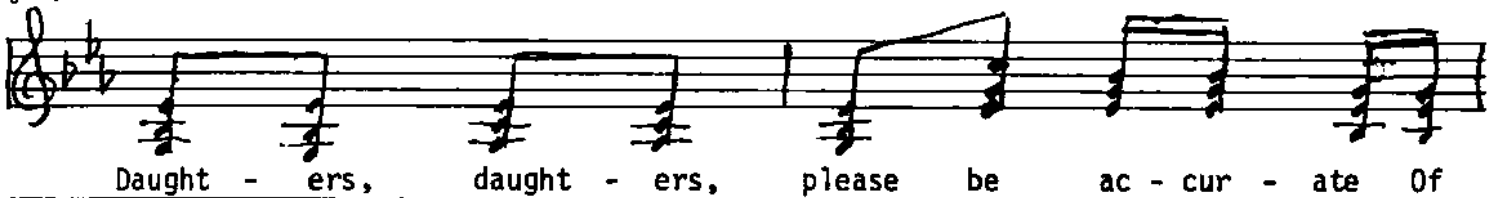
words by
Lawson Lowry Odell

WRITE YOUR HISTORY

Arranged by
Ruth B. Gatrell



2 Measure Interlude



WRITE YOUR HISTORY

PIANO INTRODUCTION

Arrangement by
Ruth B. Gatrell

Handwritten musical notation for the piano introduction. The treble clef staff contains a melody starting with a quarter note G4, followed by quarter notes A4, B4, and C5. The bass clef staff provides accompaniment with eighth notes. A first ending bracket labeled "1.h." spans the first two measures of the treble staff. The key signature has two flats (Bb and Eb), and the time signature is 4/4.

Handwritten musical notation for Verse I. The treble clef staff contains a melody with eighth and quarter notes. The bass clef staff provides accompaniment with eighth notes. The key signature has two flats (Bb and Eb), and the time signature is 4/4.

Verse I from Book P. 47

PIANO INTERLUDE

Handwritten musical notation for the piano interlude. The treble clef staff contains a melody with eighth and quarter notes. The bass clef staff provides accompaniment with eighth notes. The key signature has two flats (Bb and Eb), and the time signature is 4/4.

Verse II

mf Row, row, row your boat, *mp* Gen - tly down the stream. For

all that is past is gone you know, And the fu - ture is but a dream.

PIANO ACCOMPANIMENT FOR WRITE YOUR HISTORY

Reuben And Rachel

Moderato

Arr. by Alfred M. Durham

mf

1. Reu - ben, Reu - ben, I've been think - ing, What a grand world this would be,
 O my good - ness grac - ious Rach - el, What a queer world this would be.

2. Reu - ben, Reu - ben, I've been think - ing, What a gay life girls would lead,
 Rach - el, Rach - el, I've been think - ing, Men would have a mer - ry time.

If the men were all trans - port - ed, Far be - yond the North - ern sea.
 If the men were all trans - port - ed, Far be - yond the North - ern sea.
 If they had no men a - bout them, None to tease them, None to heed.
 If at once they were trans - port - ed, Far be - yond the salt - y brine.

3. Reuben, Reuben, stop your teasing, If you've any love for me,
 I was only just a fooling, As I thought of course you'd see.
 Rachel, if you'll not transport us, I will take you for my wife,
 And I'll split with you my money, Ev'ry pay day of my life.

NOTE: This song may be used as a duet, with ladies and men alternating through the verses. Or it may be used as a Canon, the second part entering after the first part has sung two measures.